

Middle School Menu December 2009



Menu Prices for Middle School

Breakfast	Amount	Lunch	Amount
Student	\$1.25	Student	\$1.75
Reduced	\$0.30	Reduced	\$0.40
Adult	\$1.65	Adult	\$2.75

Extra Milk — \$0.50

www.carrollcountyschools.com

MILK CHOICE IS SERVED WITH EACH MEAL.	MONDAY	TUESDAY	WEDNESDAY	THURSDAY	FRIDAY
DAY	NOVEMBER 30	DECEMBER 1	2	4	4
BREAKFAST	Biscuit Choice or Muffin / Cereal / Juice	Breakfast Burrito or Chicken Biscuit / Fruit	Biscuit Choice or Cheese Omelet / Fruit	Biscuit Choice or Pancakes w/ Sausage / Fruit	Biscuit Choice or Cheese Toast / Yogurt / Juice
LUNCH	Chicken Sandwich or Turkey Club Choose 2: Tater Tots / Lettuce, Tomato, Dill Slice / Cole Slaw / Pear Salad / Peanut Butter Cookie / Glazed Apple Wedges	Beef Taco or Fajita Chicken Taco on Loco Bread Choose 2: Pinto Beans / Lettuce, Tomato, Cheese Cup / Tortilla Chips w/Cheese Dip / Orange Wedges / Salsa / Spanish Rice / Baked Cinnamon Apples	Vegetable Beef Soup w/ P. B. J. Sandwich or Pimento Cheese Sandwich Choose 2: Saltines / Grapes / Juice Bar / Vegetables w/Dip / Tossed Salad w/Dressing	Spaghetti w/Meatballs w/Garlic Bread or Pizza Dippers w/Marinara Sauce Choose 2: Tossed Salad / Steamed Carrots / Corn on Cob / Peach Halves (2) / Fruit Cobbler	Teriyaki Chicken or Homemade Steak & Gravy Choose 2: Steamed Rice / California Blend Vegetables / Fried Okra / Roll / Applesauce w/Cherry Garnish / Strawberry-Banana Cup
SALAD	Chef Salad	Caesar Salad	Chef Salad	Caesar Salad	Smuckers Sack

DAY	7	8	9	10	11
BREAKFAST	Biscuit Choice or Honey Wheat Bun / Fruit	Biscuit Choice or Cereal & Colby Cheese Square /Fruit	Manager's Choice	Chicken Biscuit or Breakfast Pizza / Fruit	Biscuit Choice or Breakfast Wrap / Fruit
LUNCH	Cuban Sandwich or Corndog Choose 2: Ranch Style Beans / Shoestring French Fries / Lettuce, Tomato, Dill Pickle / Plum / Strawberry Shortcake	Beef Nachos w/Cheese Sauce or Crisпитos (2) Choose 2: Corn / Tossed Salad / Glazed Baby Carrots / Rosey Pear Slices / Peach Slices	Turkey Roast w/Gravy or Glazed Ham Choose 2: Creamed Potatoes Seasoned Green Beans Roll / Peas & Carrots Mixed Fruit Salad / Fresh Grapes	P.B. & J. Sandwich or Grilled Cheese Sandwich Turkey Noodle Soup Choose 2: Vegetables w/Dip / Tossed Salad / Juice Bar / Tangerine	BBQ Sandwich or Sloppy Jo Choose 2: Baked Fries / Pear Halves / Baked Beans Baby Carrots & Broccoli w/Dip / Strawberry Fruit Pop
SALAD	Chef Salad	Pretzel Plate	Chef Salad	No Salads	Ham & Cheese Sack Lunch

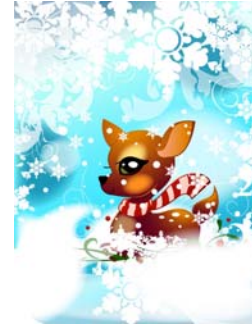


MENU IS SUBJECT TO CHANGE.

This explains what to do if you believe you have been treated unfairly. In accordance with Federal law and U.S. Department of Agriculture policy, this institution is prohibited from discriminating on the basis of race, color, national origin, sex, age, or disability. To file a complaint of discrimination, write to USDA, Director, Office of Civil Rights, 1400 Independence Avenue, SW, Washington DC 20250-9410 or call (800) 795-3272 or (202) 720-6382 (TTY). USDA is an equal opportunity provider and employer.



Middle School Menu December 2009



Menu Prices for Middle School

Breakfast	Amount	Lunch	Amount
Student	\$1.25	Student	\$1.75
Reduced	\$0.30	Reduced	\$0.40
Adult	\$1.65	Adult	\$2.75

Extra Milk — \$0.50

www.carrollcountyschools.com

MILK CHOICE IS SERVED WITH EACH MEAL.	MONDAY	TUESDAY	WEDNESDAY	THURSDAY	FRIDAY
DAY	14	15	16	17	18
BREAKFAST	Biscuit Choice or Apple Cinnamon Mini Loaf w/Cereal / Peach Slices	Pancake on a Stick or Sausage Biscuit / Peach Slices	Biscuit Choice or Honey Wheat Bun / Applesauce	Biscuit Choice or Grilled Cheese Sandwich / Fruit	Biscuit Choice or French Toast w/Syrup / Juice
LUNCH	Popcorn Chicken Bites or Pork Roast & Gravy Choose 2: Creamed Potatoes / English Peas / Blackeye Peas / Roll / Plum / Peach Slices	“Breakfast for Lunch” Chicken Biscuit or Pancakes w/Sausage Choose 2: Egg Patty / Cheese Grits / Hash Brown Patty / Grapes / Fruit Cocktail / Juice Cup	Pepperoni Stuffed Pleaser or Asian Chicken Nuggets w/Roll Choose 2: Tossed Salad / California Blend Vegetables / Jello w/Fruit & Topping / Corn / Sno Cup	Mozzarella Cheese Sticks or Hot Dog Choose 2: Chili w/ Beans / Saltines / Steamed Broccoli w/Cheese Sauce / Baked Potato w/Butter & Sour Cream / Cherry Applesauce / Spice Cake	Manager’s Choice
SALAD	Chef Salad	Caesar Salad	Chef Salad	Caesar Salad	P.B. & J. Sack Lunch

DAY	21/28	22/29	23/30	24/31	25/JAN. 1
BREAKFAST	<h1>Merry Christmas & Happy New Year!</h1>				
LUNCH					
SALAD					

MENU IS SUBJECT TO CHANGE.

CHRISTMAS HOLIDAYS DECEMBER 21 – JANUARY 4



This explains what to do if you believe you have been treated unfairly. In accordance with Federal law and U.S. Department of Agriculture policy, this institution is prohibited from discriminating on the basis of race, color, national origin, sex, age, or disability. To file a complaint of discrimination, write to USDA, Director, Office of Civil Rights, 1400 Independence Avenue, SW, Washington DC 20250-9410 or call (800) 795-3272 or (202) 720-6382 (TTY). USDA is an equal opportunity provider and employer.